



DEFENDDOOR – Stainless steel doors and frames

Each unit is custom manufactured to achieve a flawless appearance and deliver outstanding performance and lasting value.

NATIONAL
CUSTOM HOLLOW METAL DOORS & FRAMES

The difference is quality.



Integrity breeds quality.

For more than 35 years the industry has relied on NCHM's manufacturing experience to deliver outstanding products that stand the test of time. Under the ownership of the Mathews family we continue to offer much more than a flawless exterior surface. Look inside and discover an engineering philosophy that builds each DEFENDDOOR stainless steel door and frame with quality, integrity and value.

NCHM is an industry leader that adheres to a code of business ethics and moral values, while manufacturing our products to a higher standard in a manner that is a tribute to our customers desire for quality products.

Total Quality is the core of our successful family-business practice. Because we believe and practice these principles in everything we do, our company has become an absolute "shining star" among metal door and frame providers. Our performance speaks for itself.

DEFENDDOOR – is a national brand of stainless steel doors and frames manufactured by National Custom Hollow Metal Doors & Frames, right here in the U.S.A.

We seek clients that are interested in mutually benefiting from our business experience by allowing us to compete where cost, volume, turnaround and quality are key issues to their bottom line.



Delivering the difference.

We at **National Custom Hollow Metal** see our task as more than delivering top-quality, stainless steel doors and frames. We strive to understand our clients' projects and deliver solutions tailored to their unique needs. We seek to build relationships with our clients before the project begins, so we know their needs well before the pen hits the paper, and we maintain those relationships long after the final payment is received. To us, service means becoming a vital part of our clients' projects and helping them through open doors.



Stainless steel offers strength and benefits not found in other manufacturing materials:

- **Corrosion resistance** - Stainless steel resists oxidation without the addition of special finishes and is resistant to the most aggressive cleaners, disinfectants and surfactant agents. It is well-suited for even the most corrosive environments.
- **Maintenance-free** - Stainless steel requires no painting, only occasionally wiping with water to keep its shine and flawless appearance.
- **Durability** - Stainless steel outlasts galvanized and aluminum. You can expect NCHM stainless steel doors and frames to outlast your building.

Safety and performance.

NCHM is dedicated to protecting public health, the quality of the environment, and the health and safety of our employees, customers and neighbors by producing top-quality stainless steel doors and frames that perform in the toughest environments. We work with numerous certification agencies and industry associations that set the standards for performance testing and product specifications. As a custom manufacturer, we understand the challenges of fabricating stainless steel doors and frames to comply with these requirements.



Stainless steel doors

Our DEFENDDOOR stainless steel hollow metal doors are manufactured with face sheets of 16 or 14 gauge type 304 or 316 in typical No. 3, 4 (satin) or 2b mill finishes.

Each DEFENDDOOR is internally reinforced with continuous 16 gauge stainless steel channels which span the entire height of the door on both the hinge and lock stiles and across the top and the bottom.

Each door may contain two- or four-sided seamless welds depending upon engineering specifications. The welds are then hand ground and polished to a smooth finish.

NCHM's stainless steel DEFENDDOORS are available in standard sizes as well as custom sizes up to 5'0" width and 12'0" height.

Warnock Hersey fire-rated doors with 20 minute, 3/4 hour, 1-1/2 hour and 3 hour rating are available with honeycomb cores up to a maximum size of 4'0" width and 8'0" height single door, or 6'8" width, 8'0" height pair of doors.

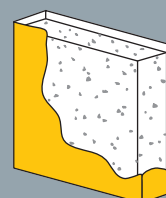
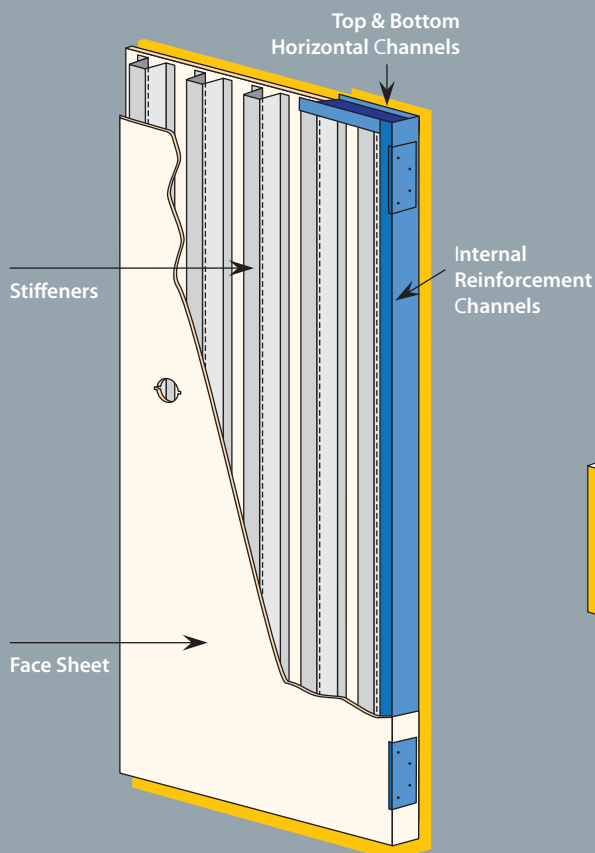


Reinforcement

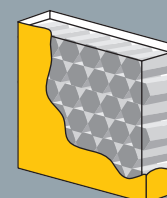
DEFENDDOORS are mortised and reinforced for hardware. Mortised reinforcements are drilled and tapped at the factory. Reinforcements for surface applied hardware are drilled and tapped in the field by the contractor. All reinforcing components are fabricated from stainless steel.

Cores

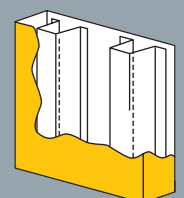
Polystyrene, honeycomb and vertically stiffened cores are available. Polystyrene cores are laminated to the inside face sheets to fill the inside of the door. Fire-labeled doors have honeycomb cores permanently bonded to the inside face sheets. Vertically stiffened doors are constructed with an insulated core (not shown) permanently bonded to the stiffeners and the face sheets.



Polystyrene



Honeycomb



Vertical Stiffeners
(Single face shown.)



Stainless steel frames

NCHM's DEFENDDOOR stainless steel hollow metal frames are manufactured with 16 or 14 gauge type 304 or 316 in typical No. 3, 4 (satin) or 2b mill finishes.

Each frame-profile is formed on a brake press for added strength and stability. The head and jamb sections are assembled with a tab-and-slot arrangement to ensure accurate alignment of the corner miters.

The face of each frame is continuously welded and hand polished to match the original exterior stainless steel surface.

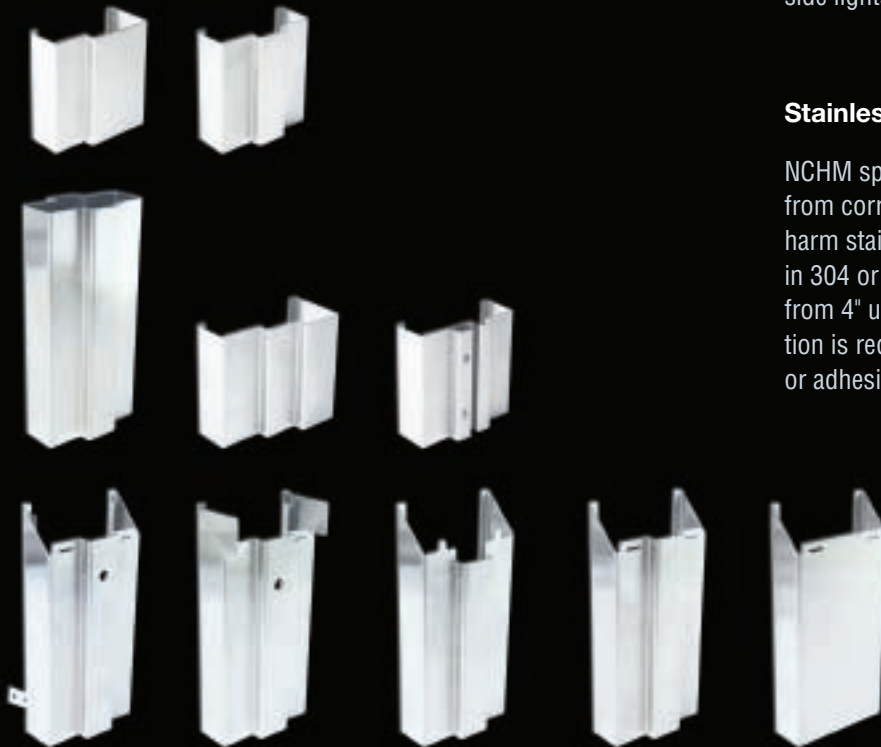
Anchorage

DEFENDDOOR stainless steel frames are furnished with a minimum of six proper anchors of manufacturer's standard design as required by wall conditions. Frames have sill anchors welded to the bottom of all jambs for attachment to the finished floor. KD Compression Anchor Frames are available upon request.

Design

If you can dream it, NCHM can craft it.

DEFENDDOOR stainless steel frames are available as standard and custom openings, borrowed lights, side lights and transom frames.



Stainless steel spats

NCHM spats provide an extra layer of protection from corrosive chemicals and or cleaners that may harm stainless steel frames. Our spats are fabricated in 304 or 316 type stainless steel and are available from 4" up to full frame height. Contractor installation is required. Spats may be attached with screws or adhesive, or securely snapped into place.

Why pay more and get less?

Let NCHM quote your next project and get a better value!

Call 501.372.3441 or 1.800.334.3070, or fax 501.375.3070.

www.DefendDoor.com



We listen. We build. We deliver—fast.

When you need it now and need it right—**quikship** is the answer. We can turn around orders for any typical size DEFENDDOOR stainless steel **door or frame in 2 - 4 weeks**, a significant time savings compared to the 8 or 10 weeks lead time required by many larger manufacturers.

For those critical times when you are in a bind, we answer the call with unmatched performance power with our—**hotrush**. We can turn around orders for any typical size DEFENDDOOR stainless steel **door in 5 working days and frames in 3 working days**.

Industries Served:

Education

University of Pittsburgh Bio Medical Research Center
Kansas State University Bio Security Research Institute
University of Notre Dame
South Lyon School
Texas Christian University
University of Washington

Food

Tyson Foods
Monogram Meats
Caribbean Food
Hollandia Dairy
Coch Foods
Keller Creamery
Fresherized Foods
Arla Foods
Lone Star Beef
Lubys Cafeterias
Newley Weds Foods
Frito Lay

International and Governmental Agencies

United States Embassy in Panama City

Healthcare

Parkdale/King Pharmaceutical
Healix
St. Vincent Infirmary Medical Center

Correctional Institutions

Otero County Processing

Laboratories

Barr Labs
Merck Pharmaceutical

Retail Facilities

The Promenade at Chenal

Research Centers

Helen Diller Cancer Research Center

Resorts

WorldMark by Trendwest

Public Safety

Water Pollution Facilities

Stadiums

New Texas Stadium, home of the Dallas Cowboys,
Kauffman Stadium, home of Kansas City Royals

© 2009, National Custom Hollow Metal Doors & Frames



1701 East 22nd Street
Little Rock, Arkansas 72206
ph: 501.372.3441
800.334.3070
fx: 501.375.3070
www.DefendDoor.com

